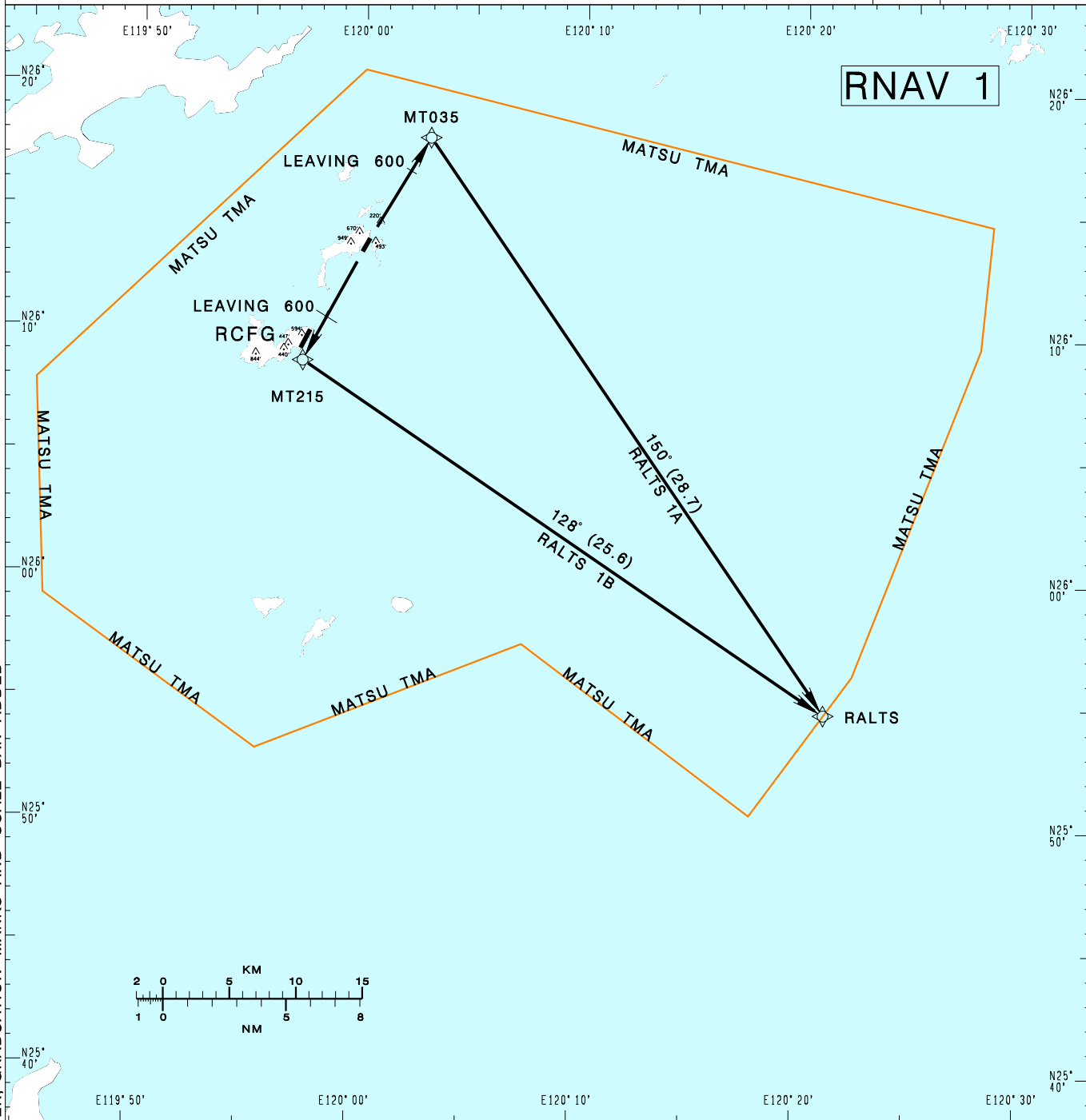


馬祖/北竿機場
MATSU/BEIGAN AD

RCMT SID
RALTS 1A RNAV(RWY03)
RALTS 1B RNAV(RWY21)

TAIPEI APP 121.0 122.3	BEIGAN TWR 118.65	ATIS 127.35			
Apt Elev: 41'		Trans Level: FL130			Trans Alt: 11,000'
BEARINGS ARE MAGNETIC; DISTANCES ARE NAUTICAL MILES; ELEVATIONS, HEIGHTS IN FEET					



CHANGES: NEW PAGE NUMBER, GRADUATION MARKS AND SCALE BAR ADDED

RALTS ONE ALFA RNAV DEPARTURE
Climb on track 033 until 600ft, then direct to MT035, then to RALTS to join W8.

RALTS ONE BRAVO RNAV DEPARTURE
Climb on track 213 until 600ft, then direct to MT215, then to RALTS to join W8.

NOTE

1. Takeoff minima
RALTS 1A RNAV: VIS 1,600M, CEIL 500ft.
RALTS 1B RNAV: VIS 1,600M.
2. RALTS 1A RNAV: Requires a minimum climb gradient of 5.0%(305ft/NM) until 600ft.
3. For CAT A /B aircraft only.
4. Critical DME and DME gap not surveyed.
*GNSS REQUIRED